

THE SOULARD SCHOOL NEWS

October, 2008
www.soulardschool.org



SOULARD OKTOBERFEST | Help is still needed to staff the beer booth this weekend @ Oktoberfest. Contact Sarah Christman (sarahxman@sbcglobal.net) or Lenny Jones (jones@seiumo.org) if you can help. Thanks!



VOLUNTEER RALLY | Thanks to all of you who showed up to the Volunteer Rally Wednesday. All committees are now staffed up and ready to assist the Soulard School!

Your participation as parent volunteers is critical to make the Soulard the best experience possible for our children. When you decided to send your child to the Soulard School, you made a financial investment because you believed that this school would be good for your child's growth. But we need more than that from you to be successful.

The Parent Association (that is each of every one of us!) can assist the Soulard School in four ways:

- ★ **Raise money and defer costs** (i.e. major school fundraisers like the Soiree or helping to perform small maintenance projects).
- ★ Public relations and **spreading the word** about the Soulard School by word of mouth.
- ★ **Communicate** the needs between parents and the administration or between parents and teachers.
- ★ **Socialization** events (for both kids and parents).

Each parent is required to sign up for at least two committees: one Soiree committee, and one general committee. Many parents signed up for more than two committees Saturday. Thank you!

Within two weeks, each non-Soiree committee liaison will hold a meeting with the full committee to let you know what you will be working on.

If you were not able to attend the meeting Wednesday, please see Sarah Christman at the Soulard School and get on a couple of committees!

- Lenny Jones, President, Parent Association

FROM THE HEAD OF SCHOOL ...

Accountability and responsibility. As these words are batted around in this presidential race, I wonder what these words really mean to the people using them. Webster's defines accountability as "answerable and/or responsible." Answerable is defined as "subject to taking blame or responsibility." Responsible is defined as "liable to be called upon to answer for one's acts or decisions." Answer (used this way: a verb) is defined as "to be responsible." The result is that responsible means to be called upon to be responsible for one's acts or decisions. It's no wonder politics can seem so gray. Everyday we use words that we think we understand, but when questioned by a child, have difficulty articulating a definition. I find that children tend to cut through the rhetoric and help me more than I help them.

When I asked one of my Soulard School friends what it means to be responsible, she matter-of-factly said, "I think it's like to take care of something." Even the best president, legislature, policy, or program intended to improve education in our country, will never be as powerful as the potential of parental involvement and community dedication. Ultimately, we at The Soulard School – individually and collectively- are directly responsible and must be held accountable for our children's education because we know nobody can care about our children as much as we do.

Your children are a priority. It necessarily follows then, that The Soulard School is a priority of yours as well. Please take the time to read the information from Lenny Jones, Parent Association President.

- Kelly

"Grown-ups never understand anything for themselves, and it is tiresome for children to be always and forever explaining things to them"

- Antoine de Saint-Exupéry, *The Little Prince*

SCHOOL CLOSED | Just a reminder that school is closed on **Friday, October 31st** for Professional Development.

NOTICE OF NONDISCRIMINATORY POLICY AS TO STUDENTS

The Soulard School admits students of any race, color, national and ethnic origin to all rights, privileges, programs, and activities generally accorded or made available to students at the school. The Soulard School does not discriminate on the basis of race, color, national and ethnic origin in the administration of its educational policies, admissions policies, scholarship and loan programs, and athletic and other school administered programs.

EVENTS & HAPPENINGS

CURRICULUM NIGHT | Join us Thursday, Oct. 9, 7:00-8:30.

Research shows that one of the most important factors in determining a child's success in school is parent involvement. Curriculum Night is your best opportunity to understand your child's school day and how you can help in the learning process. Teachers in every classroom (Pre-K included) will walk you through a school day, share expectations for the school year, and give you specific information about how you can support your child. They are very excited to have this opportunity to meet with you at length and answer any questions you might have. This is a required meeting. In fact, we feel so strongly about every parent participating that we ask the Parent Association to provide babysitting, which is available for a suggested donation of \$5 per child. Please arrive early, especially if you are dropping off children for babysitting, and proceed to your child's classroom before 7:00 so that we can begin promptly. If you have more than one child, we suggest that one parent go to each classroom. We look forward to seeing you then!



FIRST TUESDAY COFFEES | Join us Tuesday, October 7th at 8:30 AM (after dropping off your child(ren) for some good company & great treats. This month's Coffee is sponsored by the Thrive Class parents.

SOCK HOP

Join us **October 30th from 6:30 – 8:00 PM** for the 2nd Annual Souldard School Sock Hop. Watch for more info.

DJ / Dance Contest

Musical Chairs

Pumpkin Decorating

Tattoos

Bouncy House

Outside Free Play

Kid & Adult beverages

Snacks

free!

everyone welcome!

fun!

fun!

fun!

FAMILY FUN EVENTS IN ST. LOUIS

Looking for things to keep the kids busy? Here are a few fun events happening around St. Louis this month.

Best of Missouri Market

Saturday–Sunday

October 4–5

9:00 a.m. to 5 p.m.

Rain or shine



There is a small admission fee but the event offers fun for all ages and features more than 120 Missouri food producers, artisans, and vendors offering unique products, baked goods, and locally-grown fresh and dried flowers and herbs. There are musical performances daily from 11:30am-4:00pm and wide array of children's activities will also be available in the Kid's Corner.

Benton Park Chalk ART

Artists, non-artists and children are welcomed to Benton Park Chalk Art. Professional artists, novices and children will fill park sidewalks with vivid, temporary artwork. Adult participants must call 314-664-9964 to pre-register. Space is limited.

October 4th 11 am - 2:30 pm

HARTFORD Coffee Company hosts Barefoot Jones



Barefoot Jones performs acoustic show at Hartford Coffee Co. Kids of all ages are welcome to get up and jam with the band. Family Friendly, non-smoking venue
October 25th 7 pm - 9 pm

EVENTS & HAPPENINGS

BOOK FAIR

@



Saturday, November 15th, 10am-6pm
Sunday, November 16th, 11am-6pm

SPREAD THE WORD!

Left Bank Books in the Central West End is hosting a Book Fair in support of The Soulard School on Saturday and Sunday, Nov. 15th and 16th.

20% of all designated purchases will be donated as store credit to acquire books for the school library and classrooms. With two book fairs last year, we raised almost \$2,600 and collected over 50 book donations.

The Book Fair is an excellent opportunity to **spread the word** about the school. We will have an information table set up to answer questions about the school, and a wrap station to offer free gift-wrapping for customers (with a donation jar at the table). Students are encouraged to help out at the wrap station.

Storytime for the kids is at 1:00 PM and 3:00 PM on both days, and there will be plenty of reading suggestions and school wish-lists to peruse.

If you are interested in **volunteering** for the book fair as a parent representative, a gift-wraper, or a storyteller, please contact Erin Quick at erin.eq@gmail.com.

Order forms will be sent home in mid-Oct. for families to pre-order books they would like to purchase at the book fair.

Tell your friends and family to get some of their **holiday shopping** done and support our school at the same time!

"Fit 4 All"

Adult Aerobic classes now offered at the Soulard School, **Mondays and Thursdays, 6:30-7:30pm**

\$5 per class
\$30 per month or
\$75 Oct - Dec

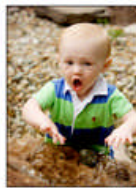
Bring a yoga mat (we have some if you don't), hand weights, a bottle of water or a cup, a towel, and an open mind.

Call Julie Price for more information 314-229-0155



7714 BIG BEND
63119
(314) 783-0300

NORDMANN PHOTOGRAPHY WWW.NORDMANNPHOTO.COM



FAMILIES IN THE GARDENS AT NORDMANN PHOTOGRAPHY

OCTOBER 11TH AND 12TH

\$199 INCLUDES SESSION AND

1 8X10 AND 2 5X7 GIFT PORTRAITS

EVENTS & HAPPENINGS

PARENTS' NIGHT OUT | Parents' Night Out is **Saturday, October 4th from 5:30 – 10:30 PM**. It's cheaper than a babysitter (\$20 for 1 kid, \$30 for 2). The kids have a blast while you get a night out on your own. (You can sign up for a shift at Oktoberfest!)

Look for a sign up sheet on the main board by the Circular Drive this week or let Sarah Christman (sarahxman@sbcglobal.net) know.

Cancellations by Friday @ 6PM so that you aren't charged, please.

STUDIO UPDATE | All of the studio classes are preparing to see the Niki de Sainte Phalle exhibition at the Missouri Botanical Garden in early October. Over the first few weeks of studio, we discussed artist proposals in relation to Public Art and looked at a variety of Folk Art examples to better understand Niki's work.



Our first project divided students into small groups to **create their own public art proposals** after studying the submissions of Christo and Jean-Claude, a French couple known for large-scale fabric installations. Our upcoming ceramic project will allow every student the opportunity to create their very own clay sculpture figurine inspired by Niki's art.

WELCOME

Congratulations! to Amy & Ian Corey who just recently welcomed Miriam & Lydia's little sister **Matilda Jane Corey** to the world, and our small corner of it.

MEET MR. WIGGLESWORTH!

He's a Bearded Dragon, and the Subjunctive Room class pet. His habitat is in the Science & Observation corner. Born in June, Mr. Wigglesworth has grown 9 inches, 2 of them since the first day of school. He loves warm temperatures, UV light, and his favorite food is super worms.

